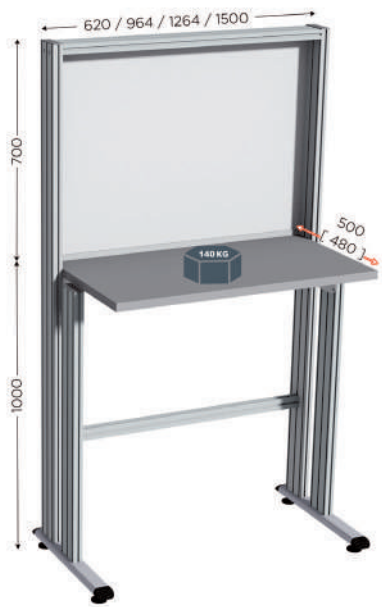


QUALIPOST 600

Quality control and communication station



WORKSHOP FURNITURE

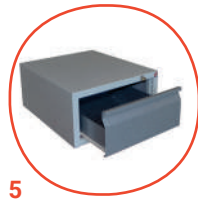
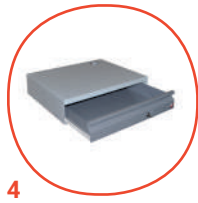
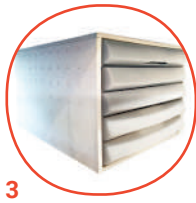
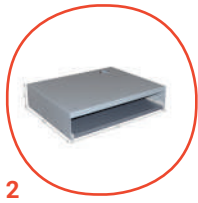
Application

- Workshop
- Control
- Warehouse
- Industry
- Lean Manufacturing
- Maintenance
- Quality

Quality Control and Communication Workstation |QUALIPOST 600 to use with any manual instruments: Display panel for control instructions. Choice of drawers for storage or for hanging folder units. Numerous options to customise your production workshops, for optimising the Quality Image.

- Solid steel base (grey epoxy painting)
- Stratified plate with PVC edges
- Back plate in white lacquered steel sheet on anodised aluminium structure which facilitates the attachment of accessories
- Kit of 4 wheels Ø 75 mm/2.95 Inch (code 120050) with brake sold separately

Accessories



CODE	DESIGNATION	LEAD TIME	PACKING
516210	W 620 x D 500 x H 1700 mm	3 days	In kit
516216	W 964 x D 500 x H 1700 mm	3 days	In kit
516222	W 1264 x D 500 x H 1700 mm	3 days	In kit
516230	W 1500 x D 500 x H 1700 mm	3 days	In kit
1	120050 Set of 4 swivel roller wheels with brake Ø 75 mm / Ø 2.95 Inch	On stock	In batch
2	531200 Keyboard drawer W 556 x D 450 x H 126 mm / W 21.89 x D 17.72 x H 4.96 Inch for QUALIPOST 600	5 days	Assembled
3	537555 PVC storage box with 5 drawers W 285 x D 380 x H 220 mm / W 11.22 x D 14.96 x H 8.66 Inch	3 days	Assembled
4	531205 Box with lock W 556 x H 125 mm / W 21.89 x H 4.92 Inch for QUALIPOST 600	5 days	Assembled
5	531206 Housing with lock W 556 x H 275 mm / W 21.89 x H 10.83 Inch for QUALIPOST 600	5 days	Assembled

